

Thank You

Your Prescription is Our Recognition



Registered & Corporate Address

Block D, 10th Floor, Signature 2 Towers, Sarkhej Sanand Crossing, Ahmedabad 382210

+91 79 6617 6465, +91796617 7475 info@alviopharma.com

www.alviopharma.com

Improving Lives



Impeccable
Precision
Manufacturing



About Us

- In House Research And Development Facilities
- USFDA & WHO GMP Certified Manufacturing Plants
- Globally Present In 27 Countries

21+ Years of Legacy

250+
Happy Clients

1200+
Molecules

1400+
Combinations



Our Global Presence



Certificates





^{Rx}
Alnitro[®] - $\frac{2.6}{6.4}$

Nitroglycerin 2.6 & 6.4 mg Controlled Release Tablets

Adds Safety To Life

A paradigm shift in nitrate therapy

CPC tailored to the needs of Indian patients.
Innovative nitrate delivery, optimizing efficacy

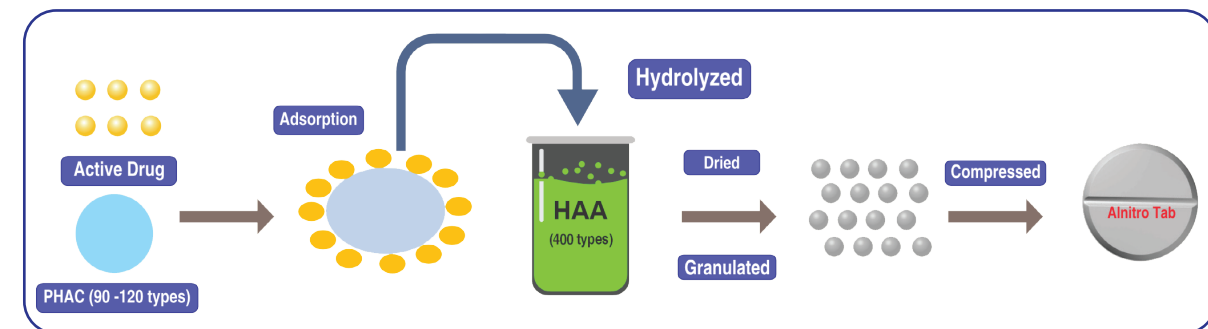


Powered with:

Consistent Plasma Concentration Technology

Mitigation of Tolerance:

Prevents the development of nitrate tolerance,
Preserving long-term effectiveness.





℞

Alnitro[®] - $\frac{2.6}{6.4}$

Nitroglycerin 2.6 & 6.4 mg Controlled Release Tablets

Adds Safety To Life



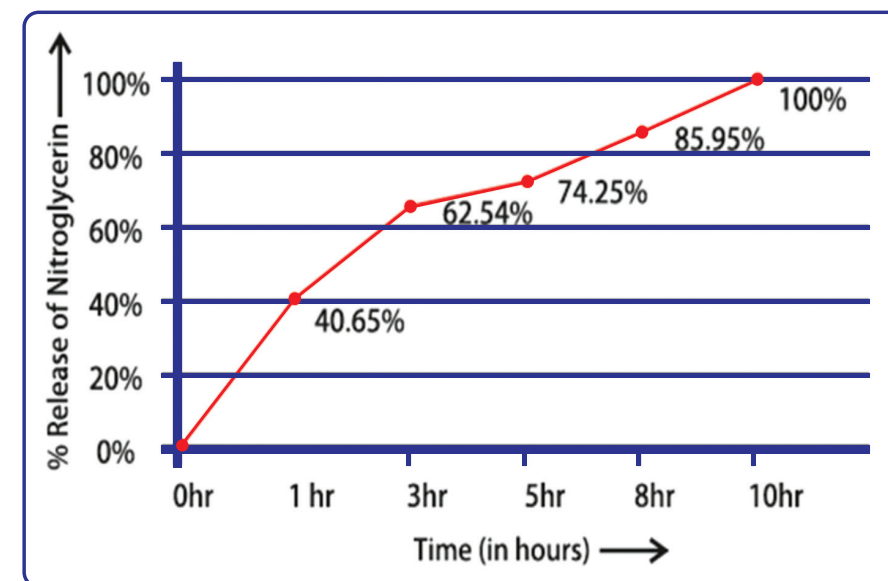
Evidence and Efficacy

Efficacy and safety in Indian patients Improved symptom control, reduced incidence of nitrate-related headaches and sustained therapeutic effects over time.

Patient Satisfaction and Adherence

High patient satisfaction: Improved tolerability and consistent efficacy.

Enhanced adherence: Reduced side effects and better symptom management.



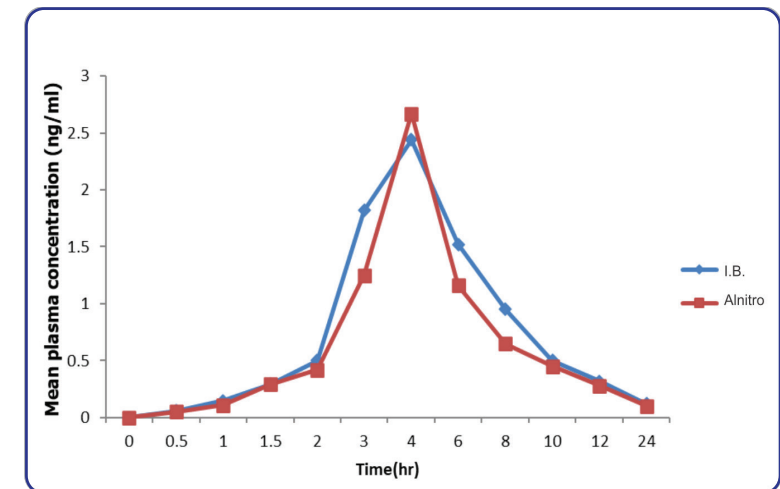


Rx

Alnitro[®] - $\frac{2.6}{6.4}$

Nitroglycerin 2.6 & 6.4 mg Controlled Release Tablets

Adds Safety To Life



Safety & Bioequivalence Profile

Favourable safety & Bioequivalence Profile

Alnitro & N_____ have same Blood Plasma Profile so
Alnitro & N_____ both are Bioequivalent*

Dosing and Administration

Convenient dosage forms, allow for flexible dosing options to meet individual patient needs



In Chronic Heart Failure With Reduced Ejection Fraction

Alnitro
Ameto-G



VIS

℞

VISART-⁵⁰/₁₀₀

Sacubitril 24 mg + Valsartan 26 mg Tablets

Sacubitril 49 mg + Valsartan 51 mg Tablets

Redefining Heart Failure Management

GUIDELINE RECOMMENDATIONS



A Cornerstone Therapy for Patients with HFrEF (typically LVEF \leq 40%),
especially those with **NYHA class II-IV symptoms.**

Reference :

<https://professional.heart.org/en/science-news/-/media/832EA0F4E73948848612F228F7FA2D35.ashx>
New York Heart Association Functional Classification Class II - IV

In Chronic Heart Failure With Reduced Ejection Fraction

Alnitro
Ameto-G



VIS

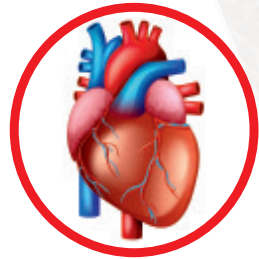
℞

VISART- $\frac{50}{100}$

Sacubitril 24 mg + Valsartan 26 mg Tablets
Sacubitril 49 mg + Valsartan 51 mg Tablets

Redefining Heart Failure Management

PARADIGM HF TRIAL



20% reduction in cardiovascular deaths



21% reduction in HF hospitalization



16% reduction in all-cause mortality

In Newly Diagnosed Mild to Moderate Hypertension

Alnitro
Ameto-G



℞

Vitel®

20
40
80

Telmisartan 20/40/80 mg Tablets

VIT

Control & Protection

Significant Reduction
SBP - 13.3 mmHg DBP - 7.2 mmHg

Vital
Organ Protector



In Moderate to Severe Hypertension

Alnitro
Ameto-G



℞

Vitel[®] 40H 80H

VIH

Telmisartan 40/80 mg + Hydrochlorothiazide 12.5 mg Tablets

24 Hour BP Control

Sustained Blood Pressure Control

Superior 24-hour BP-lowering efficacy,
especially in the last 6 hours



Vital Organ Protector



In Hypertension with CV Risk

Alnitro
Ameto-G



Rx

Vitel[®] CT- $\frac{40}{80}$

VCT

Telmisartan 40/80 mg + Chlorthalidone 12.5 mg Tablets

Protects Heart

Significant reduction in BP within one month¹

Significant Mortality Benefits²

Mrfit 6-yr follow-up
lower incidence
of CV events

21%



Vital
Organ Protector



1. J Clin Diagn Res. 2013 Apr; 7(4): 687-690
2. Journal of Clinical and Diagnostic Research. 2013 April, Vol-7(4): 687-690
SBP- Systolic blood Pressure
DBP- Diastolic blood Pressure

In Hypertension with Diabetes

Alnitro
Ameto-G



℞ **Vitel**[®]-40 AM

VAM

Telmisartan 40 mg + Amlodipine 5 mg Tablets

Comprehensive BP Control

BP reduction in 3 months¹
DBP - 10 mmHg SBP - 20 mmHg

Less Incidence of Peripheral edema²



Vital
Organ Protector



1.J Clin Hypertens (Greenwich). 2009 Apr; 11(4): 207-213
2.Journal of Hypertension 40 (Suppl 1);p e303, June 2022

In Hypertension with CAD

Alnitro
Ameto-G



℞

Vitel[®]-M²⁵/₅₀

VIM

Telmisartan 40 mg + Metoprolol Succinate Extended Release 25/50 mg Tablets

Protects Myocardium

Ensures significant BP & HR reduction¹

Prevents Cardiovascular events²

Improves QOL³



Vital

Organ Protector



1. Indian Journal of Pharmacy Practice, Vol 12, Issue 4, Oct-Dec, 2019
2. International Journal of Advances in Medicine, Vol. 10 No. 5 (2023): May 2023
3. July 2014 International Journal of Medical and Dental Sciences 3(2):403
QoL-Quality of Life

In Essential Hypertension

Alnitro
Ameto-G



℞

Vitel-LN[®]

Telmisartan 40 mg + Cilnidipine 10 mg Tablets

VLN

Dual Power

Significant Reduction in mean BP from 144.5 ± 10.2 to 123.0 ± 10.0 mmHg within 2 months¹



Vital

Organ Protector



Significant Reduction in microalbuminuria from² 66mg/L to 38mg/L

1.The American Journal of Cardiology, Volume 168, P78-82, April 01, 2022
2.National Journal of Basic Medical Sciences, Volume 10, Issue 3 2020

In Uncontrolled Hypertension

Alnitro
Ameto-G



Rx

Vitel[®] 3D

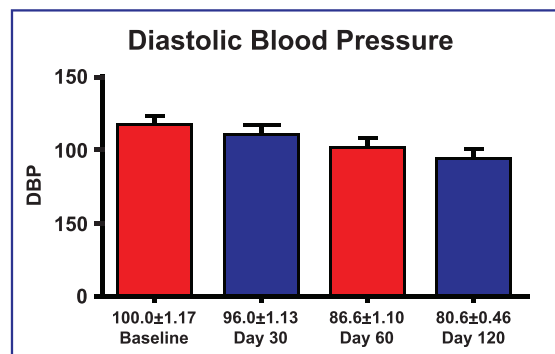
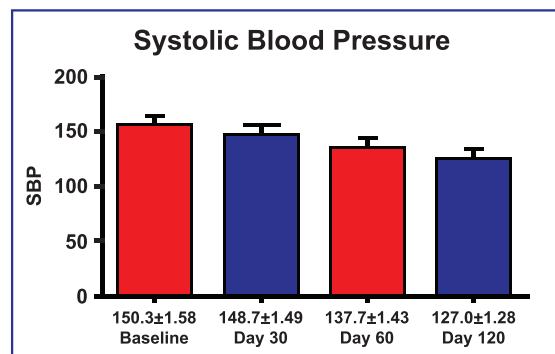
Telmisartan 40 mg + Amlodipine 5 mg + Hydrochlorothiazide 12.5 mg Tablets

V3D

Enhanced BP Control

Effective

In Indian Patients Unique Combination Control¹



Convenient

Once Daily
Dose with
24 hr
BP Control



Vital
Organ Protector



1. Int J Res Med Sci. 2015 Aug;3(8):1858-1862

In Mild to Moderate Hypertension

Alnitro
Ameto-G



^{Rx}
CilivivoTM

10

Cilnidipine 10 mg Tablets

CIL

Unique CCB With Multiple Benefits

Dual type CCB reduce the heart rate and reduce the mortality*

Safe and effective in lowering of BP without reflex tachycardia*

Day wise Therapy

Cilivivo 10

MON TUE WED THU FRI SAT SUN

MON TUE WED THU FRI SAT SUN

Lowers risk of missed doses.
Ensures better patient compliance

*<https://pmc.ncbi.nlm.nih.gov/articles/PMC5295563/>

In Diabetic Hypertensives with Proteinuria

Alnitro
Ameto-G



^{Rx} Cilivio-TS

Cilnidipine 10 mg + Telmisartan 40 mg Tablets

CTS

Better BP Control With Multiple Benefits

Achieves BP reduction goal below 130/80 mmHg.

Significantly reduces

Microalbuminuria by 41%
UACR by 30%

Reduces
CV Death
by 33%

Reduces
MACE
by 24%

1. European journal of internal medicine 126 (2024) 16-25
2. Cureus vol. 13,11 e19822. 22 Nov. 2021
3. European cardiology vol. 16 e63, 14 Dec.2021, doi:10.15420/ecr2021.16.P07

MACE- Major adverse cardiovascular events.
UACR- Urine albumin-to- creatinine ratio

In Uncontrolled Hypertension associated with CV risks

Alnitro
Ameto-G



^{Rx}
Cilivivio-Trio

Cilnidipine 10 mg + Telmisartan 40 mg + Chlorthalidone 12.5 mg Tablets

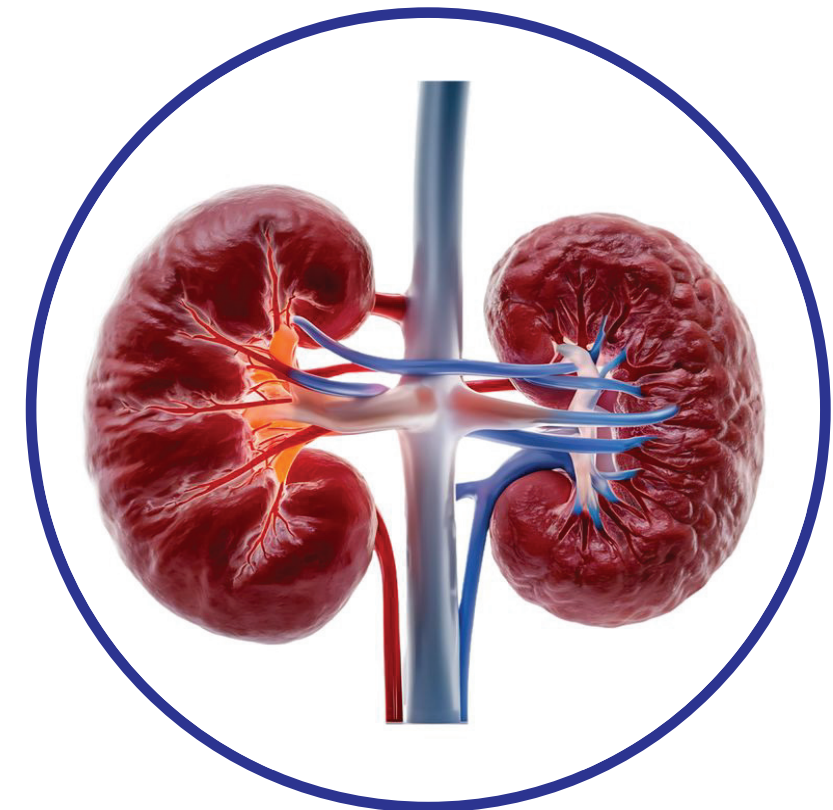
24 HRS BP Control

CTR

Offers additional BP reduction by 5.8/3.5 mmHg

Significantly reduces UACR by 40%

Reduces the risk of CV events by 21%



1. Chlorthalidone versus Amlodipine for Hypertension in Kidney Transplant Recipients Treated with Tacrolimus: A Randomized Crossover Trial
2. Curr Opin Cardiol. 2013 Jul;28(4):426-32. Doi: 10.1097/HCO.0b013e3283622075 6, 796-804

UACR- Urine albumin-to- creatinine ratio

In Hypercholesterolemia & IHD

Alnitro
Ameto-G



℞

Alvotin[®] $\frac{10}{20}$

Atorvastatin 10/20 mg Tablets

Prevents CV Risk

ATN

Reduction of
LDL - C from
25 to 41%*

Reduction
of TG from
9 to 32%*



In Diabetes & Mixed Dyslipidemia

Alnitro
Ameto-G



℞

Alvotin[®] 10F

Atorvastatin 10 mg + Micronized Fenofibrate 160 mg Tablets

Prevents Cardio Metabolic Risk

ATF

Significant Reduction¹

37% in TC

46% in LDL-C

50% in TG

22%

Increase in HDL - C





^{Rx}
Alvotin[®] **10CP**
Atorvastatin 10 mg + Clopidogrel 75 mg Capsule

The Reliable Combination

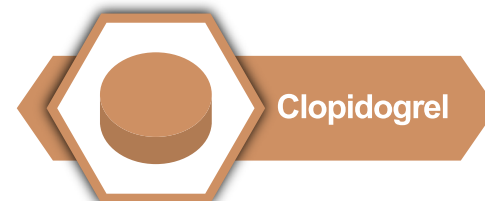
ACP

Greater Reduction of PRU value compared to monotherapy after 30 Days¹

Significant Reduction in TGs²



Atorvastatin



Clopidogrel

Film coated
Controls Blood Cholesterol

Film coated
Anti-Platelet Activity:
Compliment effects of Aspirin

Tablet in Capsule Technology



Avoids Drug to Drug interaction
Ensure Better Patient Compliance

1. JACC: CARDIOVASCULAR INTERVENTION, VOL.6, NO.2 0213 FEB2013:169-79
2. Lipids in Health and Disease (2019) 18:121
PRU: P2Y12 Reaction unit's

In Secondary Prevention

Alnitro
Ameto-G



℞

Alvotin[®] 10TRIO

Atorvastatin 10 mg + Clopidogrel 75 mg + Aspirin 75 mg Capsule

Better Outcomes

Tablet in Capsule Technology

Reduces the Risk of Stroke & Death by 50%

Avoids Drug to Drug interaction
Ensure Better Patient Compliance



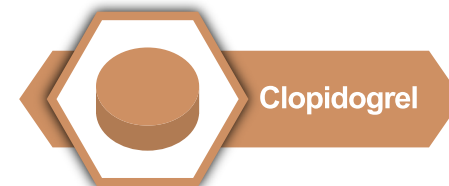
Atorvastatin

Film coated
Controls Blood Cholesterol



Aspirin

Gastro Resistant
Ensures no stomach irritation;
Anti-Platelet Effect



Clopidogrel

Film coated
Anti-Platelet Activity:
Compliments effect of Aspirin

ATR

In Hypertension with Angina & HF

Alnitro
Ameto-G



^{Rx}
Metvivo[®] CR- $\frac{25}{50}$

Metoprolol succinate 25/50 mg Controlled Release Tablets

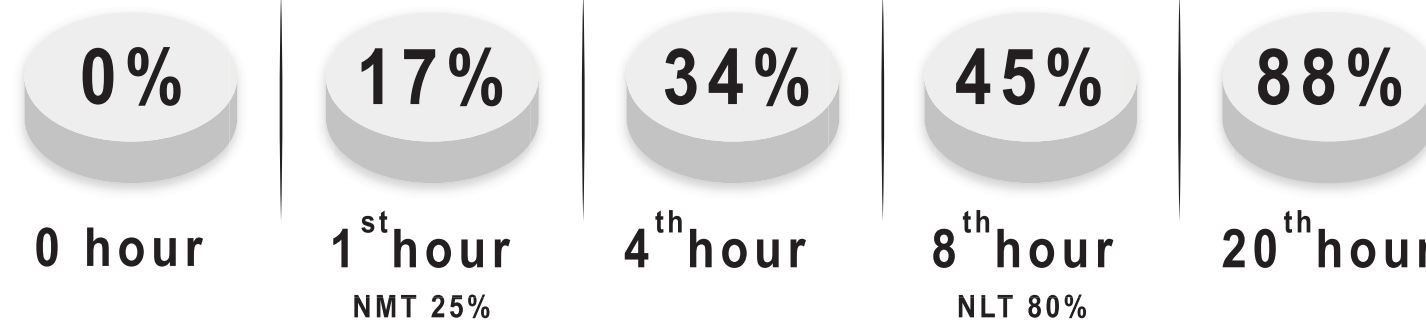
Offers Cardiac Safety



Powered with:

Consistent Plasma Concentration Technology

MET



Enhances 24-hour blood pressure control with Cardiovascular protection

lowers risk of bradycardia, hypotension

1.Hypertension 1991 Apr;17(4): 579-88
2.Clin Cardiol 1999 Oct;22 Suppl 5:V30-5

NMT. Not more than
NLT. Not less than

In Chronic Heart Failure

Alnitro
Ameto-G



℞

ALBADINTM

Ivabradine 5 mg Tablets

Revitalizes Myocardium

Combination with BB results in resting
HR from 85 bpm to 65.6 bpm within 4 months*

Reduced hospitalization for worsening heart
failure by 26%*



ALB

*.Additions 2012 (n = 2330)

HCN- Hyperpolarization - activated Cyclic Nucleotide -gated channel; BB-Beta Blocker; HR; Heart Rate

Swedberg K, Komajda M, Böhm M, et al. Lancet. 2010;376:875-885. PMID: 20723805

In Prediabetes, IGT & Metabolic Syndrome

Alnitro
Ameto-G



℞

Ameto[®] - $\frac{500}{1000}$

Metformin 500/1000 mg Extended Release Tablets

Trusted & Established

Diabetes Prevention Program*

Diabetes Incidence - 31% RRR
17% Reduction in Metabolic Syndrome Incidence

Indian Diabetes Prevention Program*

Diabetes Incidence Metformin - 26% RRR
Metformin + Lifestyle – 28% RRR

*. SPECTRUM.DIABETESJOURNALS.ORG: 336-342
RRR - Relative Risk Reduction
IGT - Impaired Glucose Tolerance



AMT



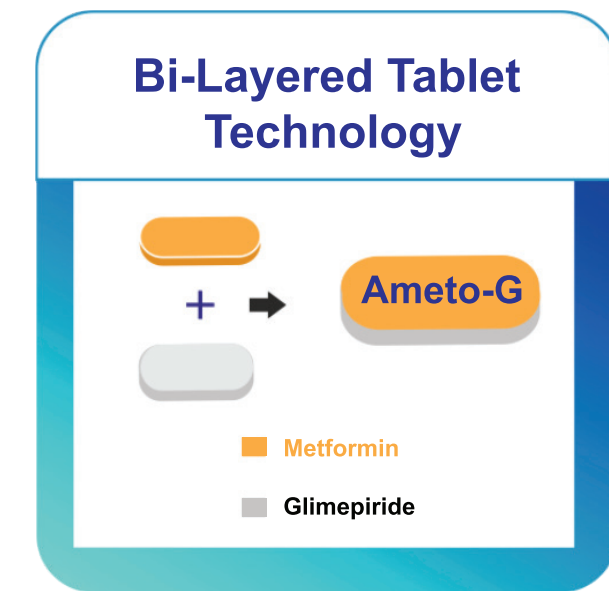
[℞]
Ameto[®] **-** G1/G2/G3/G4
G1 Forte/ G2 Forte
G3 Forte / G4 Forte

Metformin 500 mg Extended Release + Glimepiride 1/2/3/4 mg Tablets

Metformin 1000 mg Extended Release + Glimepiride 1/2/3/4 mg Tablets

Trusted Combination

GUIDELINE RECOMMENDATIONS



AMG

**Better Separation
of Drug
Ensures Better
Therapeutic Efficacy**



Rx

TM

EMZAVIO

Empagliflozin 25 mg Tablets

Expand Life

EMPA-REG
Outcome Trial

Significantly Reduces

EMZ



Cardiovascular Death Risk by 38%



HbA1c up to 0.5 to 1.2%



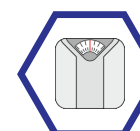
All cause mortality by 32%



FBG level by 19 to 25 mg/dL



Risk of hospitalization due to heart failure by 35%



Weight up to 2-3 kg

In T2DM Associated with High Risk of CVD & CKD

EMZAVIO-L TM $\frac{10/5}{25/5}$
Empagliflozin 10/25 mg + Linagliptin 5 mg Tablets

When Metformin Alone is Not Enough

EMZAVIO-M TM $\frac{12.5}{500}$
Empagliflozin 12.5 mg + Metformin 500 mg Tablets

Expand Life

Expand Life



Offers 30% reduction in uACR¹



Significantly reduces HbA1c by 1.19%²



Significantly decreases Ambulatory Peripheral Systolic Blood Pressure by 5.2 ± 1.5 mmHg & Diastolic Blood Pressure by 1.9 ± 1.0 mmHg³

Significantly⁴
Reduces
HbA1c up to
1.9 to 2.1%

EML

Reference:

1. Diabetes Care 2016;39(10):1718–1728
 2. A Post Hoc Analysis of the EMPA-REG OUTCOME Trial. J Am Heart Assoc. 2020;9(18):e016976.
 3. Diabetes Care 2015;38(3):384–393 <https://doi.org/10.2337/dc14-2364>
 4. European Heart Journal - Cardiovascular Pharmacotherapy (2020) 6, 364–371 ORIGINAL ARTICLE doi:10.1093/ehjcvp/pvz078
- uACR : Urine Albumin to Creatine Ratio



 [®] **Gluvas** [™]

Vildagliptin 50 mg Tablets

Better Glycemic Control

**EDGE
TRIAL**

Ensure HbA1c <7% for 55% of patients compared to other OADs¹

**GALANT
TRIAL**

Decreases 0.6 Kg body weight within 3 months²



GLU

1. Edge Trial, Vascular Health and Risk Management 2015;11 149–155
2. Galiant Trial, Expert Rev. Endocrinol. Metab. 6(2), 143–151 (2011)

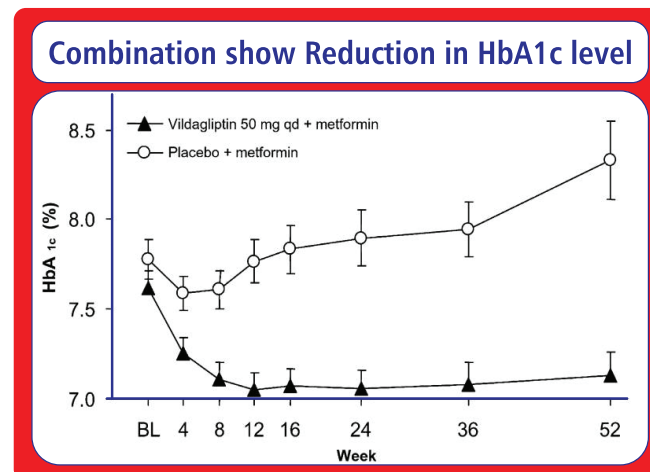
^{Rx} **Gluvas-M**TM **500** **1000**

Vildagliptin 50 mg + Metformin (SR) 500/1000 mg Tablets

Comprehensive Glycemic Control

Offers Significant Benefits over long term use*

45.4% patient improve the FPG*



GLM

In T2DM with high PPG

Alnitro
Ameto-G



℞ **Vose**[®] - $\frac{0.2}{0.3}$
Voglibose 0.2/0.3 mg Tablets

Metabolic Control Redefined

VICTORY trial

PPBG Reduction by 52.2mg/dL¹

Decreases Post Prandial Endothelial Dysfunction²



VOS

1. US Endocrinology. 2020;16(1):31-5
2. Expert Opin Pharmacother (2015), 16 (13): 1959-1981

℞

Vose-R

Voglibose 0.3 mg + Repaglinide 1 mg Tablets

A Synergistic Approach

Enhanced Glycemic Control:

Complementary mechanisms address PPHG, a critical aspect of overall glycemic control.

Reduced Risk of Hypoglycemia:

Gradual glucose absorption with tailored insulin secretion.

Improved Patient Compliance:

Simplified management of meal-time glucose spikes.



In Uncontrolled T2DM with Monotherapy

Alnitro
Ameto-G



℞

Vose-MF 0.3

Voglibose 0.3 mg + Metformin 500 mg Extended release Tablets

Enhanced Metabolic Control

Consistent glycemic benefits over 24 weeks*

HbA1c reduction by 1.62%*

2-hr PPG levels reduction by 52.89mg/dL*

Body weight reduction by 1.63 kg*



VMF

*. Diabetes Metab J 2019;43:276-286



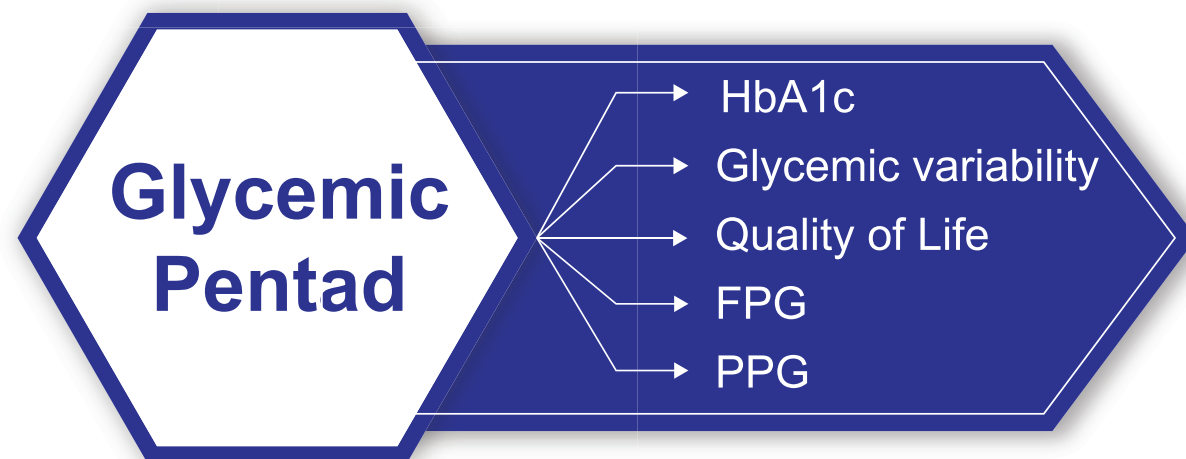
Rx

TRIVOSE[®] - $\frac{1}{2}$ $\frac{0.2/0.3}{0.2}$

Voglibose 0.2/0.3 mg + Metformin 500 mg Sustained release + Glimepiride 1 mg Tablets
Voglibose 0.2 mg + Metformin 500 mg Sustained release + Glimepiride 2 mg Tablets

Total Glycemic Control

Ensures Glycemic Pentad Target Achievement¹



Also Available

In Obese Uncontrolled T2DM

TRIVOSE[®] - **Forte 2**
Voglibose 0.2 mg + Metformin 1000 mg S.R + Glimepiride 2 mg Tablets

TRV

In T2DM associated with CV risk

Alnitro
Ameto-G



^{Rx} **SIGVIO**TM

100
50

Sitagliptin 50/100 mg Tablets

Offers Cardio Protection



14671 Patients
With T2DM and
Established CVD

Demonstrated
CV Safety

Similar Glucose
Lowering Effect With
Once Daily Dosing

Corrects 24-h
Glycemic Fluctuation,
Including Postprandial
Hyperglycemia

SIG



℞ **SIGVIOTM-M**

Sitagliptin 50 mg + Metformin 500 mg Tablets

Offers Cardio Protection

Significantly
Reduces
HbA1c by 1%

Significantly
Increases HOMA-B
Function

Less Risk of
Hypoglycemia

Weight Neutral
Therapy

In Cardiomyopathy & CFS

Alnitro
Ameto-G



℞

L-CarproTM

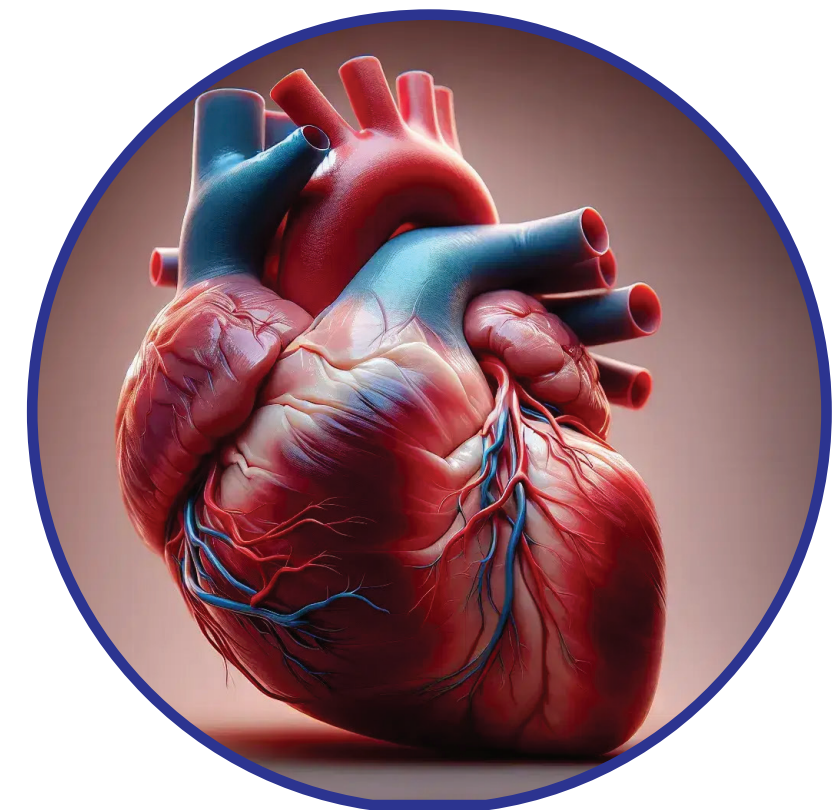
Levocarnitine 500 mg Tablets

Energy Rejuvenator

In T2DM, constantly improves insulin sensitivity with increase in glucose oxidation*

Significant ability to regulate blood flow during ischemic condition*

Safe & well tolerated in CFS*



LCA



℞

L-Carpro-Q10TM

L-Carnitine L-Tartrate 500 mg + Co-enzyme Q10 30 mg Tablets

Awesome Twosome

Hallmark protection against CV disease in diabetic patient*

Significant decrease in LDL-C & triglycerides in hypercholesterolemia patients*

**Within
12 Weeks**

**After
8 Weeks**

Significant reduction in FPG*

Ubidecarenone:

More stable & Vital
form of Co-Enzyme Q10
for Energy synthesis

*.AJP,2014,Vol 2 No,82-86 LDL-C-Low Density Lipoprotein Cholesterol
FBG-Fasting Blood Glucose

Rx

ALDUPRO

Fortified with Antioxidants + Multivitamin & Multimineral Powder

A complete nutritional therapy for longer duration

NUTRITION INFORMATION (Approx. composition)

ALDUPRO Powder		Per 100 g Powder	
Protein 20% (Derived from Skimmed Milk Powder)		18.5 g	
# Vitamins		Minerals	
Vitamin A	670.00 I.U.	Calcium	348.00 mg
Vitamin D	2.70 I.U.	Phosphorus	348.00 mg
Vitamin E 50%	6.80 mg	Magnesium	90.00 mg
Vitamin K	16.00 mcg	Sodium	250.00 mg
Vitamin C	68.00 mg	Potassium	535.00 mg
Vitamin B ₁	0.60 mg	Chloride	487.00 mg
Vitamin B ₂	0.70 mg	Iron	4.00 mg
Vitamin B ₆	0.90 mg	Zinc	2.00 mg
Vitamin B ₁₂	2.70 mcg	Copper	0.50 mg
Niacinamide	9.00 mg	Manganese	0.90 mg
Folic acid	178.00 mcg	Iodine	34.00 mcg
Pantothenic acid	4.50 mg	Selenium	30.00 mcg
Biotin	18.00 mcg	Chromium	38.00 mcg
Choline	116.00 mg	Molybdenum	30.00 mcg
		L-Carnitine	40.00 mg
		Taurine	33.50 mg
		M. Inositol	200.00 mg
		Excipients	q.s.



Delicious Vanilla Flavour

Enriched with skim milk protein



In Cardio Metabolic Disorder

Rx

Visun D3

Cholecalciferol 60,000 IU Nano Shots

Bringing Sunshine to Health

Ensures twice more bioavailability¹

Significantly increase serum Vitamin D by 73%¹

Reduces Carotid IMT in adulthood²

Significantly reduces cardio metabolic disorder by 43%²

Manufactured using
NANO
Technology

SUGAR FREE

Amber
Glass
Bottle



DOSE:
ONCE IN A WEEK

The Indian Vitamin D3 Nano Shots

1, Medicinan (Kaunas) 2091 jun 13.55 (6)pii E237
2, Maturitas volume 65, issue 3, March 2010 pages 225-236

For The Management of Neuropathic Pain

Alnitro
Ameto-G

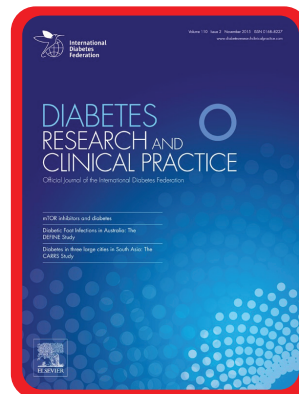


Rx

ALGABA-MN

Pregabalin 75 mg (SR) + Methylcobalamin 1500 mcg + Nortriptyline 10 mg Tablets

Rejuvenates Nerves, Relieves Pain



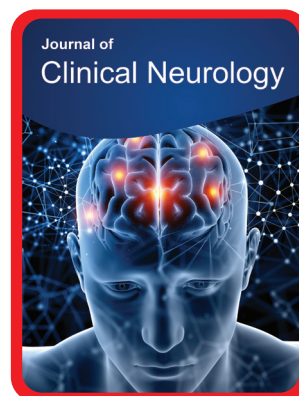
Rejuvenates Nerves

Methylcobalamin Improves Nerve Regeneration & Conduction Velocity in Diabetic Neuropathy



NEUROPATHIC PAIN | NeuPSIG
IASP Special Interest Group

Recommended as First-line treatment for neuropathic pain



Relives Pain

Ensures $\geq 50\%$ pain relief in 40–60% of patients within 4–8 weeks (vs 25% with placebo)

Affordable Pricing

BRAND	ALGABA-MN	N..R..I..A..M	D..B..N..R	G.. 2.. T..T..L
PRICING	₹ 22.5/Tab	₹ 26.62/Tab	₹ 26.37/Tab	₹ 29.43/Tab

Reference :

Journal of Clinical Neurology,20171
Diabetes Research and Clinical Practice2